



*The First in Synthetics*®

# Product Catalog

The Leader in Automotive & Diesel Performance Products

Synthetic Motor Oils  
Synthetic Drivetrain Lubes  
Oil & Air Filters  
Fuel Additives  
Appearance Products



Photo courtesy  
of General Motors.

## **Dominator Synthetic Racing Oils**

Provide superior protection and performance for high RPM, high temperature racing and high-performance applications. Shear stable formulations ensure critical engine components are protected for the duration of the race. Effectively reduce friction for maximum power and cooler engine temperatures, resulting in improved lap times and longer-lasting equipment.

**Dominator Synthetic 15W-50 Racing Oil (RD50)**

**Dominator Synthetic 10W-30 Racing Oil (RD30)**

**Dominator Synthetic 5W-20 Racing Oil (RD20)**

## **Signature Series 0W-30 Synthetic Motor Oil**

Engineered with the world's finest synthetic base oils and high performance additives, this exclusive extended drain formulation delivers superior engine protection and unsurpassed fuel economy in gasoline and diesel engines. Exceeds the requirements for modern, high-performance engines and older engines. Replaces and outperforms conventional and synthetic 0W-30, 5W-30 and 10W-30 motor oils.

**Signature Series 0W-30 Synthetic Motor Oil (SSO)**

• SAE 0W-30 • API Service SM/CF, SL, SJ... • ILSAC GF-4, 3...

## **SAE 60 Synthetic Super Heavy Weight Racing Oil**

High viscosity oil designed for high horsepower racing engines. Resists thinning effects of fuel dilution and provides unsurpassed wear protection, friction reduction and more power. Highly resistant to thermal degradation and oxidation. Also great for older Harley-Davidson motorcycles.

**SAE 60 Synthetic Super Heavy Weight Racing Oil (AHR)**

• SAE 60 • API Service SL/CF • JASO MA • ISO-L-EMA

## **SAE 20W-50 Advanced Synthetic Motorcycle Oil**

Recommended for Harley-Davidson, Buell, KTM, Ducati, Aprilia, BMW, Triumph and other motorcycle engines. Superior synthetic formulation provides long service life and maximum protection against engine wear. Superior shear stability provides unsurpassed protection for high performance engines, transmissions and primary chaincases. No friction modifiers. Wet clutch compatible.

**SAE 20W-50 Synthetic Motorcycle Oil (MCV)**

• API Service SG, SL/CF, CG-4 • JASO MA/MA2 • ISO-L-EMA2

## **SAE 10W-40 Advanced Synthetic Motorcycle Oil**

Recommended for Honda, Yamaha, Kawasaki, Victory, BMW and other motorcycle engines. Superior synthetic formulation provides long service life and maximum protection against engine wear. Superior shear stability provides unsurpassed protection for high performance engines and transmissions. No friction modifiers. Wet clutch compatible.

**SAE 10W-40 Synthetic Motorcycle Oil (MCF)**

• API Service SG, SL/CF • JASO MA/MA2 • ISO-L-EMA2

## **SAE 10W-30 Advanced Synthetic Motorcycle Oil**

Recommended for Honda, Yamaha, Suzuki and Kawasaki motorcycles and scooters, as well as Arctic Cat, Can-Am, Honda, Kawasaki and Suzuki ATVs and UTVs. Superior synthetic formulation provides long service life and maximum protection against engine wear. Superior shear stability provides unsurpassed protection for high performance engines and transmissions. No friction modifiers. Wet clutch compatible.

**SAE 10W-30 Synthetic Motorcycle Oil (MCT)**

• API Service SG, SL/CF, CG-4 • JASO MA/MA2 • ISO-L-EMA2

## **Series 3000 Synthetic 5W-30 Heavy Duty Diesel Oil**

Fuel efficient formula for pre-2007 on-road diesel vehicles, off-road diesel vehicles and gasoline vehicles. Delivers better wear protection than other popular diesel oils and effectively reduces fuel consumption. Series 3000 is ideal for EGR engines, and resists soot thickening and breakdown from heat, blow-by and acids.

**Series 3000 Synthetic Heavy Duty Diesel Motor Oil (HDD)**

Worldwide performance specifications include: • SAE 5W-30 • API CI-4+, CF, CF-2, SL • Global DHD-1 • JASO DH-1 • ACEA A3/B3, E3, E5 • Mack • Detroit Diesel • Caterpillar • Cummins • Volvo • Daimler Benz



## Synthetic Motor Oil

Dramatically outperforms conventional petroleum motor oils. Reduces friction, heat and wear for maximum power, performance and fuel efficiency. Resists high temperature burn-off, chemical breakdown and sludging to keep engines cleaner. Outstanding low temperature fluidity for fast, dependable winter starts and immediate start-up protection. Exceeds the most demanding world-wide performance standards and meets warranty requirements for all domestic and imported passenger car engines, both turbocharged and nonturbocharged. Guaranteed up to 25,000-mile or 1-year drain intervals.

**Synthetic SAE 0W-20 Motor Oil (ASM)**

**Synthetic SAE 5W-30 Motor Oil (ASL)**

**Synthetic SAE 10W-30 Motor Oil (ATM)**

- API Service SM/CF, SL, SJ, SH... • ILSAC GF-4, GF-3...

## Synthetic Premium Protection Motor Oil

Ideal for cars, hot rods, motorhomes, motorcycles, gasoline engines, diesel engines and other applications that require or benefit from higher viscosity oil. Features high zinc/phosphorus formula and detergent/dispersant additives. Outperforms leading conventional and synthetic oils.

**Synthetic SAE 10W-40 Motor Oil (AMO)**

**Synthetic SAE 20W-50 Motor Oil (ARO)**

- API Service SL/CF, SJ, SH..., CI-4+ • JASO MA (motorcycle wet clutch)

## Synthetic XL Motor Oil

AMSOIL XL Synthetic Motor Oils provide peace of mind. The oil drain interval recommendations for many of today's vehicles extend well beyond the traditional 3,000-mile interval, some up to 12,000 miles with electronic oil monitoring systems. Unlike petroleum oils that have 3,000-mile maximum recommendations, AMSOIL XL Oils provide 7,500-mile/six-month drain intervals or longer where stated by vehicle manufacturers or indicated by oil life monitoring systems. When using AMSOIL XL Synthetic Motor Oils, protection and performance are not sacrificed with longer drain intervals.

**Synthetic XL SAE 5W-20 Motor Oil (XLM)**

**Synthetic XL SAE 5W-30 Motor Oil (XLF)**

**Synthetic XL SAE 10W-30 Motor Oil (XLT)**

- API Service SM/CF, SL, SJ... • ILSAC GF-4, GF-3

**Synthetic XL SAE 10W-40 Motor Oil (XLO)**

- API Service SM/CF, SL, SJ...

## Synthetic 5W-40 European Motor Oil

Specially formulated for the lubrication needs of European gasoline and diesel cars and light trucks. Blended with advanced AMSOIL synthetic base stocks, premium additives and a broad 5W-40 viscosity rating, allowing motorists to take advantage of the maximum extended drain intervals recommended by European automakers while providing second-to-none protection and performance.

**Synthetic 5W-40 European Motor Oil (AFL) is recommended for applications requiring the following performance specifications:**

- API SM/CF • ACEA C3 • ACEA A3/B3 • ACEA A3/B4 • MB 229.31, 229.51
- BMW LL-04 • Porsche • Saab • Volvo • VW 502.00, 505.00, 505.01 • Chrysler MS-10725





## **Synthetic and Synthetic Blend 15W-40 Heavy Duty Diesel Oils**

Engineered for all types of off-road diesel engines and pre-2007 EGR and non-EGR equipped on-road diesel engines. High 12 TBN controls acids from combustion blow-by and EGR. High levels of detergency and dispersancy additives control soot thickening, oxidation and wear. Protects against bore polishing, deposit formation and ring sticking. Provides clean engine performance. Extended drain capabilities reduce downtime and motor oil expenses.

### **Synthetic SAE 15W-40 Heavy Duty Diesel and Marine Motor Oil (AME)**

#### **Synthetic Blend SAE 15W-40 Diesel Motor Oil (PCO)**

Worldwide performance specifications include:

- API CI-4+, CF, CF-2, SL • Global DHD-1 • JASO DH-1 • ACEA A3/B3, E3, E5, E7
- Mack • Detroit Diesel • Caterpillar • Cummins • Volvo • MB 228.3, 229.1

## **Synthetic 10W-30/SAE 30 Heavy Duty Diesel Oil**

Exceeds both 10W-30 multi-grade and SAE 30 straight-grade viscosity requirements. Provides outstanding performance in off-road diesel engines, gasoline engines and pre-2007 on-road diesel engines. Extends drain intervals.

### **Synthetic 10W-30/SAE 30 Heavy Duty Diesel Oil (ACD)**

Worldwide performance specifications include:

- API CI-4+, CF, CF-2, SL • Global DHD-1 • JASO DH-1 • ACEA A3/B3, E3, E5
- Mack • Detroit Diesel • Caterpillar • Cummins • Volvo • MB 228.1, 228.3, 229.1

## **Premium API CJ-4 Synthetic Diesel Oil**

The premium choice diesel oils for model year 2007 and newer diesel engines requiring API CJ-4 emission quality oil standards. Withstand the stress of heat, soot and acids to help prevent deposits, corrosion and wear. Broad viscosity range offers superior protection over a wide temperature range. Effectively reduce oil consumption and emissions, while improving fuel efficiency. Recommended for three times the original equipment manufacturer's drain interval recommendation in diesel applications, not to exceed 50,000 miles/600 hours or one year, whichever comes first.\* Recommended for two times the original equipment manufacturer's drain interval recommendation in gasoline applications, not to exceed 15,000 miles or one year, whichever comes first. Compatible with all exhaust treatment devices and designed to extend the service life of particulate filters.

\* In 2007-2010 Dodge 6.7L, Ford 6.4L and GM 6.6L LMM light-duty diesel pickups and 2007-2009 Caterpillar C13 and C15 on-highway engine applications, follow the longest manufacturer-recommended drain interval. Drain intervals can be extended further with oil analysis.

### **Premium API CJ-4 Synthetic 5W-40 Diesel Oil (DEO)**

### **Premium API CJ-4 Synthetic 15W-40 Diesel Oil (DME)**

- API CJ-4, CI-4+, CF, SM • ACEA E7, E9 • Mack EO-O Premium Plus • DDC Power Guard 93K218 • Caterpillar ECF-3, ECF-2 • Cummins 20081 • Volvo VDS-4 • MB 228.31
- MTU Type I & II • MAN 3275 • JASO DH-2 • Global DHD-1 • Renault RLD-3

## **Oil Analysis**

OIL ANALYZERS INC. provides state-of-the-art oil analysis service to its customers. Customers receive detailed analysis reports via fax, e-mail and online reporting. Expert consultation of oil condition is easily accessible by phone (877-458-3315) or e-mail (info@oaitesting.com).

## **Formula 4-Stroke® Marine Synthetic Motor Oils**

Formulated specifically for use in 4-stroke gasoline-fueled engines used in marine applications. Offer unsurpassed wear protection, viscosity stability, low volatility and excellent low temperature fluidity. Certified to meet NMMA FC-W performance specifications. Meet "Warranty Certified" status of engine manufacturers. Recommended for use in 4-stroke outboard motors including Honda, Yamaha, Mercury, Suzuki, Johnson-Evinrude (BRP), Nissan and Tohatsu. Excellent for use in marine inboard/outboard (I/O) engines including Mercury (MerCruiser), OMC and Volvo-Penta. Also for use with marine inboard power plants including Crusader, Marine Power, GM, Ford and Chrysler. Recommended for use with personal water craft (PWC) including Sea Doo (BRP), Honda, Yamaha and Kawasaki.

### **SAE 10W-30 Formula 4-Stroke® Marine Synthetic Motor Oil (WCT)**

### **SAE 10W-40 Formula 4-Stroke® Marine Synthetic Motor Oil (WCF)**

- API SL • NMMA FC-W



Oil Suction Pump (G1206)



## **Formula 4-Stroke® Power Sports Synthetic Motor Oil**

Specially formulated to provide serious protection and performance in recreational four-stroke motors, including ATVs and snowmobiles. Broad 0W-40 viscosity rating provides superior protection in both hot and cold temperature extremes.

### **SAE 0W-40 Formula 4-Stroke® Power Sports Synthetic Motor Oil (AFF)**

- API Service SG, SH, SJ, SL/CF • JASO MA/MA2 • ISO-L-EMA2

## **Formula 4-Stroke® Synthetic Small Engine Oil**

Provides superior protection in the hot temperature, severe service operating conditions of both gasoline and diesel-fueled small engines. Formulated with a high viscosity index and premium synthetic base oils that exceed both 10W-30 multi-grade and SAE 30 straight-grade viscosity requirements. Provides excellent all season protection and performance. As a commercial grade lubricant, it meets the demands of homeowner, commercial and industrial applications, improving productivity and reducing maintenance costs through superior engine protection.

### **10W-30/SAE 30 Formula 4-Stroke® Synthetic Small Engine Oil (ASE)**

- API SL, SJ, SH, SG • API CG-4, CD, CF
- JASO MA/MA2 (wet clutch) • ISO-L-EMA2

## **Formula 4-Stroke® Synthetic Scooter Oil**

Formulated specifically to meet the special needs of today's high-tech air- and water-cooled four-stroke motorized scooters, offering unsurpassed wear protection and friction reduction for longer equipment life and cooler operating temperatures. Its 10W-40 viscosity ensures consistent viscosity protection and provides additional protection for transmissions and gear boxes, while its friction modifier-free formulation ensures wet clutch compatibility and smooth clutch operation. A special anti-corrosion additive package provides long-term protection during periods of inactivity and storage.

### **SAE 10W-40 Formula 4-Stroke® Synthetic Scooter Oil (ASO)**

- API SG, SL/CF • JASO MA/MA2 (motorcycle wet clutch) • ISO-L-EMA2

## **Synthetic 80W-90 Gear Lube**

High quality replacement for applications specifying SAE 80W-90 conventional gear lube. Synthetic construction provides improved cold flow properties, high viscosity index, heat resistance and excellent wear protection.

### **SAE 80W-90 Synthetic Gear Lube (AGL)**

- API GL-5/MT-1 • MIL-PRF-2105E • Mack GO-J • Dana SHAES 234 (Eaton PS-037)

## **Universal Synthetic Marine Gear Lube**

Provides true marine gear performance, resists foaming and retains extreme pressure qualities even when subjected to 10 percent water contamination. For use in outboard lower units, sterndrives, V-drives, bow and tunnel thrusters and marine transmissions requiring a SAE 75W-90 or 80W-90 meeting either GL-4 or GL-5 performance standards.

### **SAE 75W/80W-90 Universal Synthetic Marine Gear Lube (AGM)**

- GL-5, GL-4

## **Long Life Synthetic Gear Lubes**

Specifically engineered for extended drain intervals up to 500,000 miles as set by equipment manufacturers for over-the-road trucks. Protects against wear and improves equipment life. Excellent "All Season" summer and winter performance. Outperforms all conventional gear oils. Also excellent for passenger cars and trucks. Compatible with most limited-slip differentials.

### **SAE 75W-90 Long Life Synthetic Gear Lube (FGR)**

### **SAE 80W-140 Long Life Synthetic Gear Lube (FGO)**

- API GL-5/MT-1 • MIL-PRF-2105E • Mack GO-J+
- Dana SHAES 256 (Eaton PS-163)



**AMSOIL HAND PUMP (G2039)**

## **Severe Gear® Synthetic EP Gear Lubes**

Specifically engineered for high demand applications, including trailer towing, heavy hauling, 4x4 off-road driving, commercial use and racing. Superior lube "film strength" combined with extra additives protects gears and bearings from scoring and wear. Resist high heat and possess excellent cold flow properties. Outperforms all conventional gear oils. Recommended for all types of vehicles such as turbo diesel pick-ups, SUVs, autos, trucks, heavy equipment and motor homes. Compatible with most limited-slip differentials.

**SAE 75W-90 Severe Gear Synthetic Gear Lube (SVG)**

**SAE 75W-110 Severe Gear Synthetic Gear Lube (SVT)**

**SAE 75W-140 Severe Gear Synthetic Gear Lube (SVO)**

• API GL-5/MT-1 • MIL-PRF-2105E • Mack GO-J • Dana SHAES 234 (Eaton PS-037)

## **Severe Gear® Synthetic SAE 190 and SAE 250 EP Gear Lubes**

High viscosity, extreme pressure gear lubes engineered for the demands of severe racing conditions, including off-road truck racing, rock racing, rock crawling, tractor pulling, funny car racing and dragster racing. Protect gears from shock loading and tire shake. Resist sling-off from G-forces and high speeds. Effectively cling to gears, promoting cooler operating temperatures and extending gear and bearing life.

**SAE 190 Severe Gear Synthetic Gear Lube (SRN)**

**SAE 250 Severe Gear Synthetic Gear Lube (SRT)**

• API GL-5/MT-1

## **Slip-Lock Differential Additive (ADA)**

Eliminates gear-housing chatter in cars, trucks and SUVs equipped with limited-slip, positraction and locking differentials. Reduces banging and clunking associated with automatic locking differentials. Formulated for use with both synthetic and petroleum gear lubricants and safely replaces manufacturer-recommended friction modifiers. One bottle treats differential capacities of two to four quarts.

## **Synthetic Universal Automatic Transmission Fluid (ATF)**

Exceeds the performance requirements for domestic and foreign automatic transmission fluids. Offers smooth shifting and long transmission life. Provides automatic transmissions, power steering units and hydraulic equipment with excellent lubricating protection and better performance over a wider temperature range. Resists oxidation and thermal breakdown. Provides low temperature protection. Formulated with excellent wear protection to last for extended drain intervals.

**Recommended for use in applications specifying the following:**

• GM DEXRON® III-H • Ford MERCON® & MERCON® V • Chrysler ATF+4® • Toyota Type T-III and T-IV • Honda Z-1 (Not CVT) • Diamond SP II & III (Mitsubishi/Hyundai/Kia) • Mazda ATF-III, ATF-MV • Subaru ATF • Nissan Matic D, J & K • Idemitsu K-17 • BMW LA2634 • LT 71141 • Audi G-052-025-A2 & G-052-162-A1 • Volvo 97340 • MB 236.1, 236.2, 236.5, 236.6, 236.7, 236.9 & 236.10 • JWS 3309 • NAG 1 • ETL-7045E, ETL-8072B & N402 • Voith 55.6335.XX (G607, G1363) • ZF TE-ML 03D, 04D, 09, 14A, 14B, 14C, 16L, 17C • Allison C-4, TES 389

**Use in power steering units or hydraulics where ATF is specified.**

**Not for use in CVT transmissions or Ford Type F applications.**

## **Synthetic Fuel Efficient Automatic Transmission Fluid**

Engineered to exceed the requirements of GM, Ford and Toyota where low-viscosity oil is required, providing outstanding performance without compromising protection, even in severe operating conditions. Delivers outstanding protection against sludge and varnish deposits that clog narrow oil passages and contribute to clutch glazing. Offers extraordinary cold-flow performance, improving shifting response and energy efficiency while reducing warm-up times. Provides an extra margin of protection over extended drain intervals.

**Synthetic Fuel Efficient Automatic Transmission Fluid (ATL)**

• GM DEXRON VI • Ford MERCON LV & SP • Toyota WS

## **Torque-Drive® Synthetic Automatic Transmission Fluid (ATD)**

Engineered to eliminate the deficiencies common to all conventional petroleum ATFs, AMSOIL Torque-Drive provides superior performance and protection against thermal and oxidative degradation, sludge and varnish formation and viscosity shear down. Ideal for Allison transmissions and heavy equipment.

**Recommended for use in applications specifying**

Allison® TES-295 or C-4, TES-389 (formerly Dexron® III), Mercon®, ZF TE-ML 14C, Voith 55.6335.XX (G-1363)



## Synthetic Super Shift Racing Transmission Fluid

Specially formulated for high horsepower and torque conditions. Provides quick, solid shifts. Automatic transmissions do not slip, helping racers improve on elapsed times. Delivers unmatched friction reduction and reduced wear so clutch plates and transmissions last longer. Provides maximum torque transfer and brake power while resisting oxidation and thermal breakdown.

**Supershift Racing Transmission Fluid (ART)** • SAE 10W • Ford Type F • Allison C-4

## Shock Therapy Suspension Fluid

Formulated for maximum stability and performance in high performance fork and shock applications. Effectively controls friction and heat and significantly reduces wear and scuffing. Viscosity remains constant and foam and aeration are kept to a minimum, limiting shock fade and inconsistent dampening. Offers superior performance in temperature extremes.

**STL #5** is recommended for applications that demand quick rebounds under extreme temperatures. **STM #10** is recommended for applications that require more dampening and slower rebounds.

## INTERCEPTOR Synthetic 2-Cycle Oil

Engineered specially for power sports applications and those engines equipped with exhaust power valves. Contains the finest synthetic base oils and additives available for exceptional cleanliness properties. Controls exhaust valve sticking and provides outstanding overall lubrication properties.

**INTERCEPTOR Synthetic 2-Cycle Oil (AIT)** • API TC, JASO FC

## Saber Professional and Outboard Synthetic 100:1 Pre-Mix 2-Cycle Oils

Specifically designed for lean mix ratios in pre-mix applications. Saber Professional contains high temperature detergents for small power equipment. Saber Outboard contains lower temperature dispersants for water-cooled outboard motors.

**Saber Professional Synthetic 2-Cycle Oil (ATP)** • ISO-L-EGD, JASO FD, API TC  
**Saber Outboard Synthetic 2-Cycle Oil (ATO)** • TC-W3, API TC

## Dominator Synthetic 2-Cycle Racing Oil

Robust formulation specially engineered for unsurpassed protection in high performance two-cycle motors, both on and off the track. Heavier synthetic base oils provide more *lubricity* for "on the edge" operation. Reduces friction and protects pistons and bearings subjected to the rigors of racing.

**DOMINATOR Synthetic 2-Cycle Racing Oil (TDR)** • API TC, JASO FC

## HP Injector Synthetic 2-Cycle Oil

Precise synthetic formulation exceeds the lubrication demands of modern two-cycle engines. Premium synthetic base oils and MAX-DOSE additive system provides superior performance in direct fuel injected (DFI), electronic fuel injected (EFI) and carbureted outboard motors, as well as other recreational two-cycle equipment.

**HP Injector Synthetic 2-Cycle Oil (HPI)** • TC-W3, API TC



### AMSOIL 2-Cycle Oil Recommendations

AMSOIL 2-Cycle Oil	Outboard*	Snowmobile*, Motorcycle* & ATV*	Personal Watercraft* & Jet Boat*	Chain Saw, Chop Saw & Pump	Weed Eater, Blower & Lawn Mower	Moped, Scooter & Go-Cart
<b>HP Injector (HPI)</b> TC-W3, API TC (Injection or 50:1 Pre-Mix)	Excellent (4) (5)	Very Good	Very Good	Not Recommended	Not Recommended	Not Recommended
<b>INTERCEPTOR (AIT)</b> API TC, JASO FC (Injection or 50:1 Pre-Mix)	Not Recommended	Excellent (4)	Excellent (3) (4)	Good	Good	Good
<b>DOMINATOR (TDR)</b> API TC, JASO FC (Injection or 50:1 Pre-Mix)	Racing (1)	Racing (2)	Racing (2) (3)	Very Good	Very Good	Very Good
<b>Saber Professional 100:1 Pre-Mix (ATP)</b> ISO-L-EGD, JASO FD, API TC	Not Recommended	Very Good Pre-Mix Only	Very Good Pre-Mix Only (3)	Excellent	Excellent	Excellent
<b>Saber Outboard 100:1 Pre-Mix (ATO)</b> TC-W3, API TC	Excellent Pre-Mix Only	Very Good Pre-Mix Only	Very Good Pre-Mix Only	Not Recommended	Not Recommended	Not Recommended

Equipment manufacturers and motor builders have redesigned two-cycle motors to reduce emissions and increase fuel economy. These changes have increased operating temperatures, reduced oil consumption and incorporated direct fuel injection and exhaust power valves. AMSOIL 2-Cycle Oils are designed to maximize performance in all types of engine designs and are optimized for select applications.

Even though AMSOIL 2-Cycle Oils have been optimized for specific applications, they are multi-functional and recommended for use in many areas. The chart rates each oil's performance abilities per application as follows:

**Excellent:** The primary recommendation for the oil. The oil is specifically designed for the operating conditions of the motors in these markets. There is only one "Excellent" recommendation per category.

**Very Good:** A main recommendation for the oil. Identifies an oil that is very good for the operating conditions of these motors.

**Good:** A secondary recommendation for an oil. The oil was not specifically designed for these applications. However, the chemistry in the oil is suited to the operating conditions of these motors.

**Not Recommended:** Identifies applications where the product was not intended for use.

**Notes:** (1) Not recommended for long-term use in outboard motors as a TC-W3 type oil, although excellent as a racing oil for short term use where motors are periodically inspected.

(2) Excellent for racing or modified motors. Very good for recreational use.

(3) For applications calling for a TC-W3 product use the recommendations listed under Outboards.

(4) Recommended for all direct fuel injected (DFI), electronic fuel injected (EFI) and carbureted motors.

(5) Includes Mercury® Optimax®, Johnson® & Evinrude® FICHT® & E-TEC™, Yamaha® HPDI, Nissan® & Tohatsu® TLDI®.



### ***Ea Oil Filters (EaO)***

AMSOIL Ea Oil Filters are the highest efficiency filters available to the auto/light truck market. Featuring advanced full synthetic nanofiber technology, Ea Oil Filters provide greater efficiency, capacity and durability than cellulose filters, extending engine and filter life and reducing engine wear. When used in conjunction with AMSOIL Synthetic Motor Oil in gasoline and diesel vehicles, Ea Oil Filters are recommended for up to 25,000 miles or one year, whichever comes first, in normal service or up to 15,000 miles or one year, whichever comes first, in severe service.

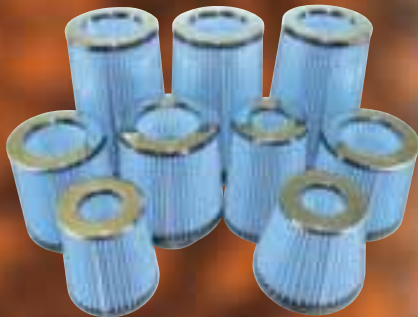


### ***Ea Air Filters (EaA)***

AMSOIL Ea Air Filters incorporate nanofiber technology which has been used exclusively in severe and heavy duty applications. AMSOIL Ea Air Filters are more efficient and have greater capacity than cellulose and wet gauze filters, effectively extending engine and filter life and reducing engine wear. Cleaning of Ea Filters with a shop vacuum or low pressure shop air is recommended every 25,000 miles or one year, and they have a total service life of 100,000 miles or four years.

### ***Ea Universal Air Induction Filters (EaAU)***

AMSOIL Ea Air Induction Filters are constructed of advanced nanofiber technology and fit most popular air intake systems on the market, providing improved cold air intake and excellent efficiency for superior engine protection and performance. Ea Air Induction Filters are cleanable and remain serviceable for long filter life, saving money on filter costs. Cleaning of Ea Air Induction Filters with a shop vacuum or low pressure shop air is recommended when designated by the restriction gauge or according to operating conditions.



### ***EaAR Air Filters***

Specially designed for carbureted racing and street rod applications, AMSOIL EaAR Air Filters are composed of advanced nanofiber media for higher dirt-holding capacity and lower pressure drop compared to traditional filter medias. Provide greater air flow and efficiency than other assemblies of this type. EaAR Filters are cleanable and remain serviceable for long filter life. Cleaning of EaAR Air Filters with a shop vacuum or low pressure shop air is recommended when designated by the restriction gauge or according to operating conditions.

### ***Ea Pre-Filters (EaPF)***

Constructed of woven mesh and designed for racing and off-road applications, AMSOIL Ea Pre-Filters fit over the top of AMSOIL EaAR and EaAU Filters, preventing large particles from sticking to them and blocking the flow of air. Easily removed and shaken free of debris in seconds. Ea Pre-Filters are cleanable and remain serviceable for up to one year.





## ***Ea Motorcycle Air Filters (EaAM)***

AMSOIL Ea Motorcycle Air Filters replace Harley Davidson OEM and S&S filters, incorporating nanofiber technology that offers superior efficiency, air flow and capacity for extended equipment and filter life and enhanced performance. Ea Motorcycle Air Filters are cleanable and remain serviceable for up to four years, saving money on filter costs. Cleaning of Ea Motorcycle Filters with a shop vacuum or low pressure shop air is recommended every year or according to operating conditions.

## ***Ea Motorcycle Oil Filters (EaOM)***

AMSOIL Ea Motorcycle Oil Filters feature full synthetic nanofiber technology, providing superior protection for motorcycles, ATVs and four-stroke personal watercraft, snowmobiles and outboard motors. Ea Motorcycle Oil Filters last longer, stop smaller dirt particles and offer less restriction, extending equipment and filter life and improving performance. Ea Motorcycle Oil Filters are fluted for easy removal from motorcycles. Available in black or chrome.

## ***WIX Filters***

AMSOIL also offers premium WIX filters to complement the AMSOIL filter line and help meet virtually every automotive and light truck need.

- OIL FILTERS • AIR FILTERS • FUEL FILTERS • RACING FILTERS
- TRANSMISSION FILTERS

Contact your AMSOIL Servicing Dealer for more information.

## ***MANN-FILTER Filters***

AMSOIL offers a complete line of premium MANN-FILTER oil, air, fuel and cabin air filters for European auto, light truck, SUV and select motorcycle applications. Contact your AMSOIL Servicing Dealer for more information.

## ***PowerCore® Air Filters***

The rugged structure of PowerCore® filters, for Ford 6.0L and 6.4L Diesel PowerStroke™, GM 6.6L Duramax and Hummer H2 6.0L Vortec™ applications, feature an innovative, layered, fluted filter media which allows air to enter an open flute while forcing it out an adjacent flute, allowing only clean air into the engine. Dirty air is effectively filtered and cleaned in only one pass through the media. Ten times more efficient than standard filter designs.

PowerCore® is a registered trademark of Donaldson Company Inc.  
These filters are manufactured by Donaldson for AMSOIL.





## **Heavy Duty Donaldson Filters**

AMSOIL offers premium Donaldson oil, air, fuel, coolant and hydraulic filters for diesel and heavy duty applications. Donaldson Endurance™ Air Filters with exclusive nanofiber technology and Donaldson Endurance™ Oil Filters with premium advanced synthetic media technology deliver significantly higher efficiency and capacity than conventional filters, extending engine and filter life. P-Series oil and air filters offer premium filtration at a competitive price, featuring advanced media designed to trap wear-causing contaminants and extend equipment life. Contact your AMSOIL Servicing Dealer for more information.

## **Donaldson 7.3L PowerStroke™ Diesel Air Induction System**

Replaces the present air intake system and provides unmatched performance and filtering efficiency on 1999 to 2003 model year Ford F-250 to F-550 Super Duty trucks and SUVs with 7.3L PowerStroke Diesel engines.

## **Ford 6.0L Diesel Fuel Filter**

Designed for the Ford 6.0L Diesel PowerStroke™ engine. Incorporates both a primary and secondary filter for maximum fuel cleanliness.

## **Injen/AMSOIL Diesel and Gasoline Air Intake Systems**

Effectively maximize power by increasing air flow and minimizing air resistance. Capture cooler air from outside the engine compartment, improving fuel combustion and performance. Manufactured with aerospace alloy T6 aluminum, stainless steel clamps and tig-welded ports and brackets. Dyno-tuned for peak performance. Direct bolt-in applications for quick and easy installation. Premium AMSOIL Ea Air Filters ensure superior protection, efficiency, air flow and maximum filter life.

## ***EaBP By-Pass Filters***

Engine wear is caused by dirt and agglomerated soot particles larger than 5 microns. AMSOIL EaBP Filters are high efficiency by-pass filters that also remove soot. The two stage pleated and layered cellulose/full synthetic media has an efficiency rating of 98.7 percent at two microns. These filters remove 39 percent of soot contaminants less than one micron. At normal operating RPMs the EaBP Filter will filter all of the oil in a typical five quart sump in less than 10 minutes.

Some mechanical ability required for installation.

Yellow mounting stand for demonstration purposes only; not included.

## ***Dual-Remote Oil Filtration Mount***

Versatile system combines full-flow and by-pass oil filtration on a single, easy-to-install mount. All installation parts are included.

## ***Dual-Gard Oil Filtration Mount***

Links two AMSOIL By-Pass Filter elements together for engines with sump capacities over 20 quarts. Allows fast and simple servicing with spin-on elements.

## ***Marine Dual Remote Oil Filtration Kit***

High efficiency oil filtration system for marine applications combines full-flow and by-pass oil filters on an easily accessible remote mount. Adapter kits allow system to be used with a wide variety of marine engines.

## ***Heavy-Duty By-Pass System***

Maximum filtration performance for virtually all heavy-duty diesel applications, including Class 6, 7 and 8 heavy-duty trucks, off-road equipment, buses, generators, marine engines, logging and agricultural equipment.





## ***Synthetic Manual Transmission and Transaxle Gear Lube***

Designed to meet the special requirements of certain manual transmissions and transaxles. Provides improved internal component protection. Formulated with extreme pressure additives and advanced synchronesh qualities that provide smooth shifts while protecting gears, bearings and seals. Non-corrosive to yellow metals. Recommended for manual transmissions and transaxles that require 75W-85, 75W-90 or 80W-90 viscosities and any of the following performance specifications: API GL-4 and MT-1, ZF TE-ML 02B, 16A, 17A and 19A, Chrysler MS-9070, MAN 341 ML. Recommended for use in NV 4500 transmissions and replaces GM part #12346190 and Chrysler part #4874459. Meets GL-4 specifications required by some models of Acura, Hyundai, Infiniti, Kia, Land Rover, Lexus, Mazda, Mitsubishi-Fuso and Zetor. Ideal for muscle car transmissions including Muncie, Borg-Warner, Saginaw, Ford Toploader, Dearborn and New Process. Also recommended for Gear Vendors Gear Splitters.

### **Synthetic Manual Transmission and Transaxle Gear Lube (MTG)**

- SAE 75W-90 • API GL-4

## ***Synthetic Synchronesh Transmission Fluid***

Specifically designed for manual transmissions and transaxles with synchronesh systems that require light viscosity, non-extreme pressure fortified oil. Formulated with advanced additive technology to provide proper friction characteristics for smoothshifting without grinding or bump shifting while providing the ultimate in gear and bearing protection. Outperforms motor oils in manual transmissions and provides excellent performance in extreme temperatures from -40° F to 300° F. Possesses outstanding anti-wear and anti-foam properties and is non-corrosive to yellow metals. Recommended for use in manual transmissions and transaxles such as New Venture NV T350, 1500, 2550, 3500, 3550, 5600, Tremec T-4, T-5, T-18, T-176, TKO-500, TKO-600, TR3450, TR3550. Replaces GM part # 12345349, 12345577, 12377916 and 1052931, Chrysler part # 4874464 and 4874465. Meets GM specifications 9985648, 9986105 and 9985535 and Chrysler MS-9224 and MS-9417. Also replaces Honda Genuine MTF and MTF-94 used in some Range Rovers, MGs and Mini Coopers. Not for use in engines or wet clutches.

### **Synthetic Synchronesh Transmission Fluid (MTF)**

## ***Synthetic Tractor/Hydraulic Transmission Oil (ATH)***

Formulated for combinations of transmissions, hydraulic systems, final drives, power take-off systems and wet brakes, including hydrostatic lawn mower transmissions. Exceeds the most demanding "all weather" specifications of both Case New Holland (CNH) MAT 3525 and MAT 3526 (formerly Ford New Holland FNHA-2-C-200 & 2-C-201) and John Deere J20C & J20D, as well as most other tractor hydraulic/transmissions, eliminating the need for seasonal oil changes. SAE 5W-30

## **Synthetic Compressor Oil**

Provides outstanding protection and performance in rotary screw, rotary vane, reciprocating and other compressor applications. Compatible with PAO-, ester- and petroleum-based compressor oils. Not compatible with glycol- or silicone-based compressor oils.

**Synthetic Compressor Oil (PCH)** • ISO 32 • SAE 10

**Synthetic Compressor Oil (PCI)** • ISO 46 • SAE 20

**Synthetic Compressor Oil (PCJ)** • ISO 68 • SAE 30

**Synthetic Compressor Oil (PCK)** • ISO 100 • SAE 40

**Synthetic Compressor Oil (PCL)** • ISO 150 • SAE 50

## **SIROCCO™ Synthetic Compressor Oil**

Provides superior protection and performance in rotary screw and vane compressors. Increases operating efficiency, reducing money spent on energy, repair and maintenance costs. Recommended as a direct replacement for PAG compressor oils such as Sullair Sullube 32 and Ingersol Rand SSR Ultra Coolant. Compatible with PAG-, PAO-, ester- and petroleum-based compressor oils. Not recommended for use with silicone base fluids.

**SIROCCO™ Synthetic Compressor Oil (SEI)** • ISO 32/46 • SAE 5W-20

## **Synthetic Powershift Transmission Fluid**

Specifically formulated for heavy-duty powershift transmissions. Provide outstanding friction performance for enhanced clutch engagement. Formulated to prevent slippage and glazing. Shear stable and anti-wear fortified. Protect gears and bearings. Resist high temperature oxidation, varnish and sludge formation. Superb cold flow properties. Extended drain interval capable. Recommended for heavy-duty service found in commercial and earth moving applications as well as lighter duty transmissions requiring the listed specifications. SAE 30 & 50 are also excellent for manual transmissions.

**Synthetic Powershift Transmission Fluid (CTG)**

• SAE 10W • CAT TO-4 • Allison C-4 • Komatsu KES 07.868.1 • API GL-1

**Synthetic Powershift Transmission Fluid (CTJ)**

• SAE 30 • CAT TO-4 • Allison C-4 • Komatsu KES 07.868.1 • API GL-1

**Synthetic Powershift Transmission Fluid (CTL)**

• SAE 50 • CAT TO-4 • CD-50 • Komatsu KES 07.868.1 • API GL-1

## **Synthetic Antiwear Hydraulic Oil**

Protects hard-working hydraulic systems from the stress of high-pressure, high-load and heavy duty operations. Remains fluid in cold temperatures for immediate cold-weather flow. Special anti-wear additives and rust inhibitors provide optimum protection to expensive equipment. Provides maximum efficiency for reduced fuel usage and increased production.

**Synthetic Hydraulic Oil (AWF)** • ISO 15

**Synthetic Hydraulic Oil (AWG)** • ISO 22

**Synthetic Hydraulic Oil (AWH)** • ISO 32

**Synthetic Hydraulic Oil (AWI)** • ISO 46

**Synthetic Hydraulic Oil (AWJ)** • ISO 68

• Denison HF-0, HF-1, HF-2 • Vickers M-2950-S, I-286-S

• Cincinnati Milacron P-68, P-69, P-70 • MEHF





## **Series 2000 Synthetic Racing Grease**

Ultimate protection for hard-driven, high-performance vehicles. Dramatically reduces friction and wear for improved performance.

### **Series 2000 Synthetic Racing Grease (GRG)**

- N.L.G.I. #2, GC/LB

## **Synthetic Polymeric Off-Road Grease**

Formulated to resist impact/pound-out and provide outstanding protection and performance in the extreme environments faced in heavy-duty off-road equipment. Provides exceptional adhesion and cohesion properties, resists water washout and stays in place longer, providing outstanding lubrication over extended service intervals, reducing maintenance costs and extending equipment life. Extends lubrication intervals by up to two times over competitive greases tested.

### **Synthetic Polymeric Off-Road Grease (GPOR1 & GPOR2)**

- N.L.G.I. #1 and #2

## **Synthetic Multi-Purpose Grease**

Reduces friction and wear in high-speed/high-temperature components such as automotive wheel bearings and electric motors. It keeps components running clean and trouble-free for outstanding performance and long life.

### **Synthetic Multi-Purpose Grease (GLA, GLB & GLC)**

- N.L.G.I. #0, #1 and #2, GC/LB

## **Synthetic Multi-Purpose Spray Grease**

The same great AMSOIL Synthetic Multi-Purpose Grease in a convenient spray formulation. Ideal for greasing hard-to-reach equipment such as hinges, springs and many other common applications.

### **Synthetic Multi-Purpose Spray Grease (GLC-SC)**

## **Synthetic Heavy-Duty Grease**

Extreme-pressure, moly-fortified. Provides outstanding protection for four wheel drive steering knuckles, spring shackles and other components operating in high-load conditions.

### **Synthetic Heavy-Duty Grease (GHB & GHD)**

- N.L.G.I. #1 and #2, GC/LB

## **Synthetic Water Resistant Grease**

Resists water washout and degradation. Outstanding protection for boat trailer wheel bearings and other components frequently exposed to water.

### **Synthetic Water Resistant Grease (GWR)**

- N.L.G.I. #2, GC/LB

## **X-Treme Synthetic Food Grade Grease**

An ultra-premium lubricant designed for high levels of protection in food and pharmaceutical industry equipment. USDA H-1 rated for incidental contact with food.

### **X-Treme Synthetic Food Grade Grease (GXC)**

- (USDA H-1) N.L.G.I. #2 High Temperature EP

## **Synthetic Fifth Wheel and Open Gear Compound**

Stays in place and protects over a broad temperature range without flaking in low temperatures or softening in high temperatures. Excellent for fifth wheel applications, with a convenient aerosol spray application that creates less mess. Designed to resist water washout. Can also be used in open gear applications.

### **Synthetic Fifth Wheel and Open Gear Compound (GFW)**

- AGMA 14R

## **Semi-Fluid 00 Synthetic EP Grease**

Formulated with high viscosity ISO-460 synthetic base oils and a sophisticated additive package, providing unparalleled protection against wear. Ideal for leaky gear boxes in industrial and fleet applications, centralized lubrication systems and for use in applications that are difficult to service. Primarily used in grease-filled cases where conventional semifluid greases do not provide adequate lubricant life or protection. Replaces Mobil SHC 007.

### **Semi-Fluid 00 Synthetic EP Grease (GSF)**

- N.L.G.I. #00

## **Synthetic High Viscosity Lithium Complex Grease**

Lithium complex thickened grease blended with premium ISO-320 synthetic base oils. Fully compounded with additives providing EP protection, oxidation resistance and rust and corrosion protection. Excellent for use in heavy duty industrial and off road applications where equipment is working under adverse conditions such as exposure to environmental elements, slow, heavily-loaded applications and shock-loading conditions.

### **Synthetic High Viscosity Lithium Complex Grease (GVC)**

- N.L.G.I. #2

## **PI Performance Improver (API)**

PI Performance Improver is an ultra-potent gasoline additive. As a concentrated detergent, it provides excellent cleaning of combustion chamber deposits, intake valve deposits and port fuel injector deposits, eliminating the need for expensive fuel injector cleaning procedures. It is ideal for use prior to emissions inspections, and it helps maintain peak engine efficiency, fuel economy, power and drivability in newer low mileage engines. In engines with accumulated deposits, PI provides improved fuel mileage up to 5.7%, reduced emissions, restored power and performance, reduced need for higher octane fuel, reduced carbon rap and pre-ignition, better drivability and smoother operation after only one tank of gasoline. Treat one full tank of gas every 4,000 miles or 100 hours of service.

## **Cetane Boost Diesel Fuel Additive (ACB)**

Improves combustion efficiency to increase power in diesel engines. Raises Cetane three to seven numbers. Also improves low-temperature starting, fuel ignition quality and reliability. Treats up to 200 gallons.

## **Diesel Concentrate (ADF)**

Total system cleaner and lubricity improver for all types of heavy and light-duty diesel engines. Formulated with Ultra Low Sulfur Diesel fuel (ULSD) in mind, Diesel Concentrate controls the problems created by EGR systems by neutralizing acids during combustion, minimizing acidic cylinder wear, reducing the rate of TBN depletion and maintaining oil quality. Cleans fuel injectors and combustion chamber for improved efficiency and better sealing and minimizes soot loading. Improves the oxidation and thermal stability of diesel fuel, improves fuel economy by up to five percent, restores horsepower and protects against water contamination. Compatible with all types of exhaust emission systems, including diesel particulate filters (DPF's). Also recommended in heating oil furnace applications.

## **Diesel Cold Flow Improver (ACF)**

Recommended for low temperature applications below 40°F. Effectively modifies wax crystal formation at low temperatures to depress diesel fuel pour point and improve cold flow filtration properties. Lowers the cold filter plugging point by as much as 34°F and decreases the need for #1 diesel fuel diluted with kerosene. Contains jet fuel-type deicer to help prevent ice formation in fuels contaminated with water. Compatible with diesel particulate filters (DPF's).

## **Diesel Concentrate Plus Cold Flow Improver (DFC)**

Premium, year-round diesel fuel additive that provides improved efficiency and maximum cold-weather performance. Combines the superior detergency and lubricity of AMSOIL Diesel Concentrate with the excellent anti-gelling properties of AMSOIL Cold Flow Improver in one convenient package without sacrificing performance.





Fluid Extraction Pump (G2576)



## ***Diesel Recovery (DRC)***

Quickly and effectively dissolves the wax crystals that form when diesel fuel surpasses its cloud point. Quickly liquifies gelled diesel fuel, thaws frozen fuel filters and reduces the need for a new filter, saving money and allowing the operator to continue driving with minimal downtime. Performs well in all diesel fuels, including ULSD, off-road and biodiesel. Alcohol-free and non-corrosive.

## ***Synthetic Universal Power Steering Fluid***

Effectively reduces friction and delivers excellent wear protection and lubricity, resulting in cooler operating temperatures, longer component life and quieter operation. Low pour point ensures immediate lubrication at startup and in cold temperatures, while high viscosity index resists thermal breakdown and maintains maximum protection in high temperatures.

### **SYNTHETIC UNIVERSAL POWER STEERING FLUID (PSF)**

- Ford 9M2C138-CJ, M2C33-F & ESW-M2C128-C&D  
 • Volkswagen TL-VW-570-26 & TL-52146 • GM 9985010 Saginaw Power Steering Systems • DaimlerChrysler MS1872 & MS5931F  
 • America Motor Corporation C4124 • Navistar TMS 6810 • Acura/Honda  
 • Mercedes Benz • Saab • Subaru • Audi

## ***High Performance Brake Fluids***

Provide superior performance in auto/light truck, high performance, racing and powersports applications. Maintain stable viscosities over a wide temperature range. Superior additive packages raise boiling points to more than 232°C (450°F). Water is kept in suspension, slowing its effects on braking systems. High boiling temperatures ensure maximum life and reliable braking power in extreme conditions.

### **Series 500 High Performance DOT 3 Brake Fluid (BF3)**

- FMVSS 116 • SAE J1703 • ISO 4925 • Federal Specification V V-B-680

### **Series 600 High Performance Racing DOT 4 Brake Fluid (BF4)**

- FMVSS 116 • SAE J1704 • Federal Specification V V-B-680

## ***Series 2000 Octane Boost (AOB)***

AMSOIL Series 2000 Octane Boost improves the performance of all two-cycle and four-cycle gasoline fueled engines. AMSOIL Octane Boost maximizes power, reduces engine knock and improves ignition and engine response. Helps fuel burn cleaner and removes carbon deposits. Excellent as a lead substitute at same treat rates in older off-road equipment, 4x4 off-road vehicles and gasoline racing vehicles. One bottle treats 15 gallons.

## ***Series 2000 Synthetic Chain Case Lubricant (TCC)***

Provides superior protection and performance for enclosed chains. Ideal for snowmobiles, ATVs and general equipment. Extreme Pressure additives provide extra wear protection. Extends chain life, repels water and inhibits rust, oxidation and foam. Superior low-temperature starting, performance and protection.

## ***Silicone Spray (ALS)***

Perfect for lubricating nonmetallic surfaces that come into contact with metal, nylon, cardboard, fiberglass, wood or plastic surfaces. Works great as a suede protectant. Use anywhere a light-duty or silicone lubricant is required. Special nonstain formula. USDA H-1 rated.



## **MP Metal Protector (AMP)**

Disperses water and protects metal surfaces from rust and corrosion. Penetrates existing rust build-up and loosens bolts. Also dries wet electrical systems. A must for any home or shop. Keep a can in your vehicle, too.

## **Heavy Duty Metal Protector (AMH)**

A heavy duty spray lubricant fortified with special rust and corrosion inhibitors. It penetrates and adheres to metal surfaces, leaving a dry, long lasting wax-like protective coating. Dries completely and doesn't attract dust. Ideal for motorcycle, bicycle and ATV chains. Also works well as an undercoat, preventing rust and eliminating squeaks.

## **Engine Flush (AEF)**

Cleans the crankcase, cylinder walls, pistons and rings for maximum efficiency, protection and performance. Preps engines for installation of AMSOIL Synthetic Motor Oil. Flushing requires one bottle per vehicle (4 to 6 qt. oil capacity). Not suitable for motorcycles, ATVs or snowmobiles.

## **Power Foam (APF)**

Improves starting and performance. Cleans dirty intake systems and spark plugs and frees sticky valves. Also removes gum, varnish and carbon deposits from engine exterior surfaces. Not recommended for engines with a mass airflow sensor (MAF).

## **Engine Fogging Oil (FOG)**

Superior film retention provides stored equipment with long-term protection against corrosion and dry starts, extending engine life and reducing operating expenses. Its aerosol spray formulation offers easy and clean applications, while reaching more components and offering complete distribution of the oil, something especially beneficial in applications with horizontal cylinder orientation, such as outboard motors.

## **Gasoline Stabilizer (AST)**

AMSOIL Gasoline Stabilizer keeps fuel from deteriorating during storage. AMSOIL Gasoline Stabilizer reduces the oxidation process and prevents varnish and gum build-up in gasoline. These contaminants can clog injectors, stick floats and cause poor engine performance. Treat rate is one ounce with every 2.5 gallons of fuel. Treats 40 gallons total.

## **Semi-Synthetic Bar & Chain Oil (ABC)**

Clings to metal surfaces better than other oils. Delivers unparalleled lubrication and protection.

## **Propylene Glycol Antifreeze and Engine Coolant (ANT)**

Combines the benefits of biodegradability, low toxicity and all-weather protection. AMSOIL Propylene Glycol Antifreeze and Engine Coolant is safer for kids and pets than ethylene glycol coolants. Offers protection for 750,000 miles/7 years for over-the-road diesel trucks and 250,000 miles/7 years for gasoline vehicles. Compatible with all other major antifreeze products.





### ***BriteSide™ Miracle Wash Aerosol Spray (AMW)***

A unique dry car wash and polish delivers outstanding performance and quick, easy and economical applications. No water required. Specially formulated surfactants lift dirt and other particles from the surface of your car and hold them in suspension. Miracle Wash then acts as a shield, protecting the surface from abrasion while you wipe the dirt clean. Repels dust and light dirt particles and protects against the sun's harmful ultraviolet rays.

### ***BriteSide™ Rain Clear Windshield Protectant (ARS)***

Maximize visibility in all kinds of weather. Rain, snow and sleet are repelled off glass. Wind action of driving forces moisture off the windshield, giving a clear view of the road ahead.

### ***Mothers® Automotive Appearance Products***

AMSOIL offers premium Mothers automotive and marine appearance products that include everything needed to clean, polish and care for vehicles. Contact your AMSOIL Servicing Dealer for more information.



### ***NGK Spark Plugs and Wires***

AMSOIL offers top-of-the-line NGK Iridium IX, V-Power, Standard and Commercial spark plugs and Spark Plug Wire Sets and Power Cable Wire Sets for auto/light truck, powersports, auto racing and small engine applications. Contact your AMSOIL Servicing Dealer for more information.



### ***TRICO Wiper Blades***

AMSOIL offers top-of-the-line TRICO Exact Fit, NeoForm, Winter and Heavy Duty Wiper Blades, meeting virtually every automotive and heavy-duty application. Contact your AMSOIL Servicing Dealer for more information.



# Promotional Items



## A.J. AMATUZIO SIGNATURE SERIES RACE JACKET

High quality jacket features 14.5 oz. brushed twill, satin lining with inside pocket, knit cuff and waistband, shoulder pads, racing collar and stainless steel snaps. Large, generous fit. Sizes S-3X.



## POCKETED BUTTON-DOWN SHIRT

Air Force Blue pocketed button-down shirt. 65/35 polyester/cotton blend with moisture-wicking and stain release finish. Generous fit across shoulders and extra long tail. Sizes S-4X.



## BLADE T-SHIRT

Stylish blue 100 percent pre-shrunk cotton t-shirt. Sizes S-3X.



Back



Front

## PRO RACING T-SHIRT

New style pro-racing t-shirt. 50/50 cotton/polyester blend for comfort and durability. Sizes S-3X.



## RED FLAME CAP

Embroidered logos on the front and back. Spandex woven sweatband for the perfect fit. One size fits most. Coordinates with the Red Flame Jersey.



## CAMOUFLAGE CAP

Embroidered logo and velcro closure.



Back

## USA CAP

Embroidered logos and design. Spandex woven sweatband for the perfect fit. One size fits most.



## PEWTER CAP

Metallic pewter logo on front. A.J. Amatuzio signature on the visor. Flex fit back for the perfect fit. One size fits most.

## REVERSIBLE SCREWDRIVER

Both flat head and Phillips head on the same screwdriver. To change heads, simply pull metal piece out and flip.



## BALL POINT PENS

Featuring the signature of AMSOIL CEO & President A.J. Amatuzio.



## DECALS

Various sizes available from 4" to 48".



## LOGO KEY RING

Features AMSOIL logo and "The First in Synthetics" on a black background.



## STAINLESS STEEL MUG

Fourteen oz. mug is thermally insulated for hot or cold beverages. Features translucent blue acrylic outer shell, stainless steel inner shell and spill proof lid.



## AMSOIL RACING DECALS

Full color AMSOIL race decals leave a definite impression wherever you decide to display them. Various sizes available from 4" to 48".

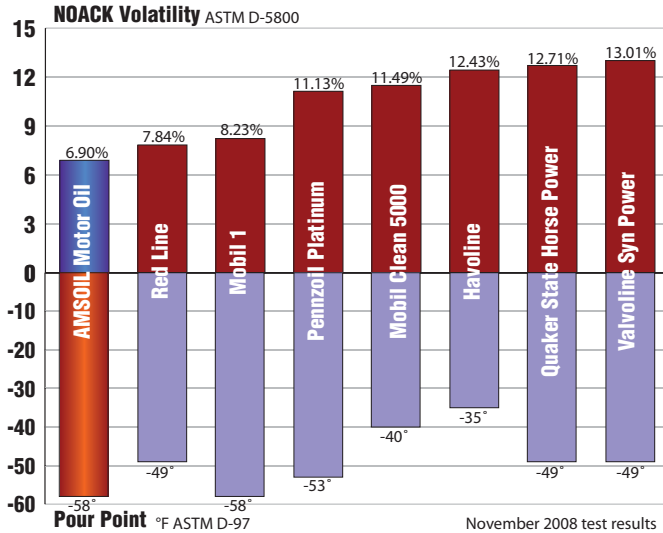


## CAN/POCKET COOLIES

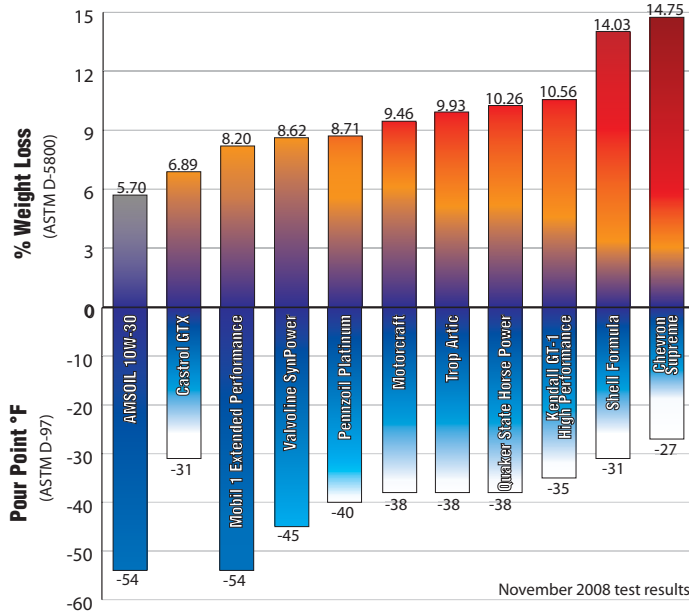
Keeps beverages cold and refreshing. Constructed of high-quality neoprene. Folds flat to fit in pocket.

# We Couldn't Put It on Our Packaging if It Wasn't True.

## Less High-Temperature Evaporation and Better Low-Temperature Protection with AMSOIL



## Less High-Temperature Evaporation with AMSOIL



## Lower Cold-Temperature Flow Properties with AMSOIL

AMSOIL products and Dealership information are available from your local AMSOIL Dealer.

